



GMT MONTHLY MEMBERSHIP PROGRESS REPORT

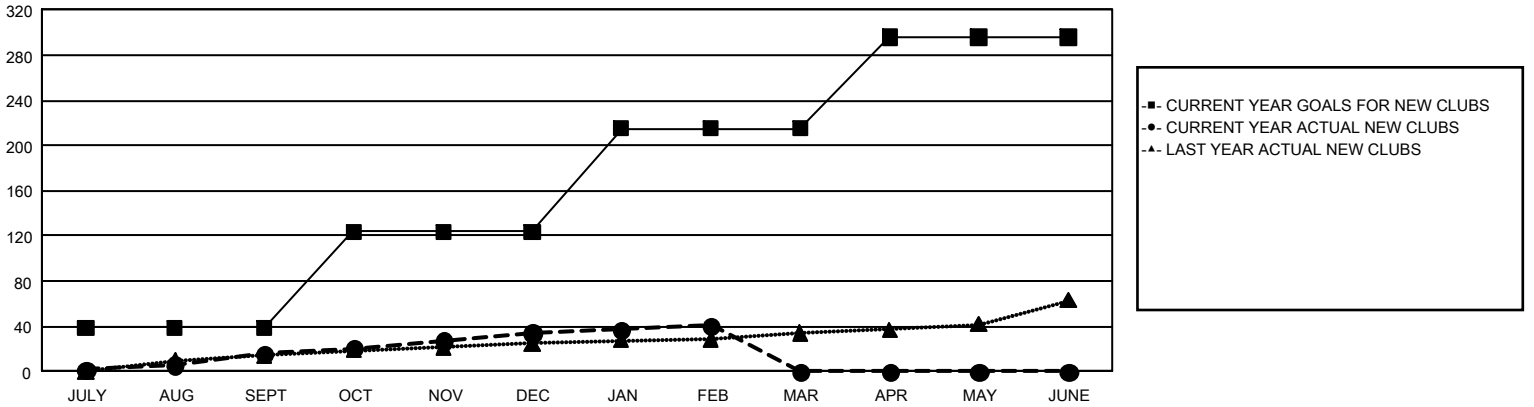
GAT Constitutional Area 1

Results as of: 2/29/2024

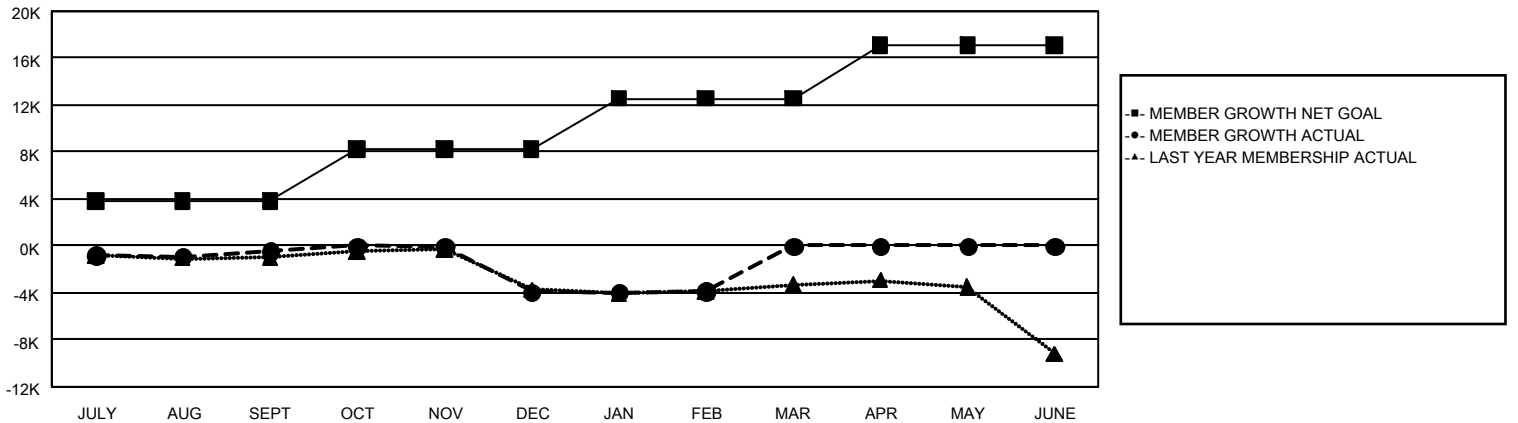
REPORT DOES NOT INCLUDE CLUBS IN UNDISTRICTED AREAS.

Clubs				Members			
RESULTS FOR 2023-2024				RESULTS FOR 2023-2024			
QUARTER	NEW CLUB GOAL	NEW CLUBS	DROPPED CLUBS	QUARTER	MEMBER GROWTH NET GOAL	MEMBER GROWTH ACTUAL	DROPPED MEMBERS ACTUAL (including transfers)
JULY/AUG/SEPT	39	16	62	JULY/AUG/SEPT	3,838	8,134	7,639
OCT/NOV/DEC	85	18	128	OCT/NOV/DEC	4,390	6,976	9,688
JAN/FEB/MAR	91	7	33	JAN/FEB/MAR	4,337	5,174	4,480
APR/MAY/JUNE	81	0	0	APR/MAY/JUNE	4,578	0	0

GOALS AND ACTUAL NEW CLUBS CUMULATIVE



GOALS AND ACTUAL MEMBERS CUMULATIVE



DROPPED CLUBS: 222

5,208 CLUBS OF 10,121 ADDED 1 OR MORE NEW MEMBERS

GENDER DISTRIBUTION

MALE 167,204 (63.44%)
FEMALE 96,213 (36.51%)

DROPPED MEMBERS

DECEASED	2,851
CLUB CANCELLED	1,479
OTHER	17,477
TOTAL	21,807

[CLICK HERE FOR CUMULATIVE MEMBERSHIP DATA](#)

TOTAL FAMILY UNIT MEMBERS	51,324
FAMILY MEMBERS PAYING HALF DUES	26,400